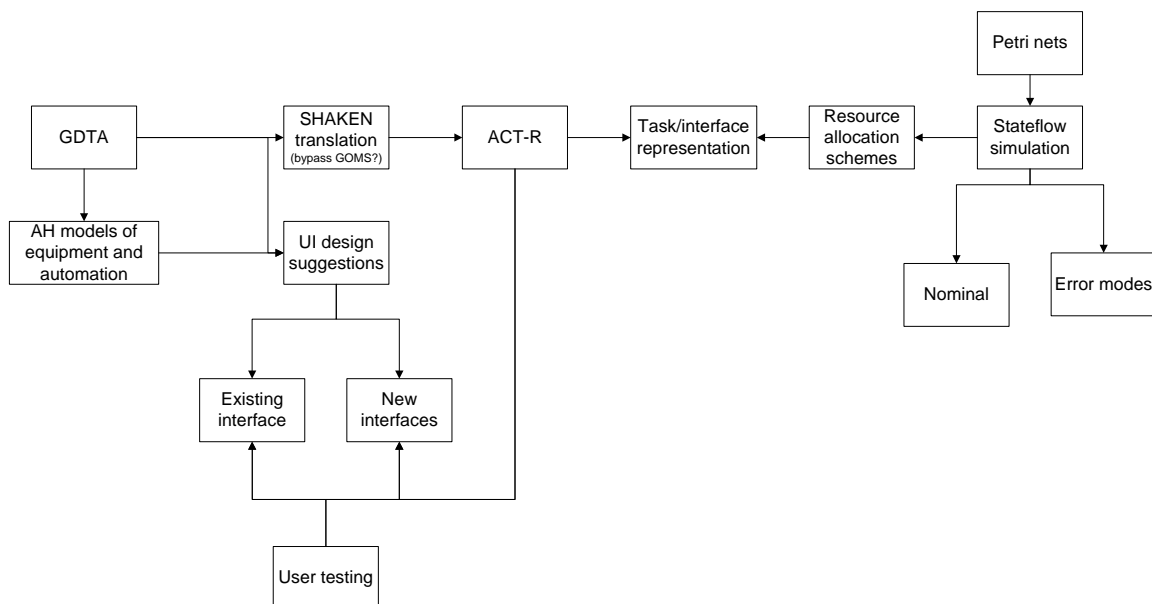


Notes from ITR Meeting on 4/25/2005

- Contact Responses:
 - Still no reply from Beckman Coulter regarding requests for SAMI/SILAS software access.
 - Received time estimates of each screening test step from Kristin.
- Current research status
 - Dr. Chow's team
 - Began implementing Petri net model in Stateflow.
 - Stateflow simulation will be used to determine resource allocation (e.g. bandwidth, sampling time).
 - Need to determine if Stateflow can be used to represent Petri nets. Size of model may increase exponentially if not.
 - Dr. Kaber's team
 - Prepared revised GDTA and GDTA diagrams.
 - Used GDTA and AH models of HTS automation to generate interface design suggestions for task 1.1.9.
 - ITR project web page posted to internet (http://people.engr.ncsu.edu/dbkaber/NSF_ITR/).
 - Dr. St. Amant's team
 - It may be possible to use the GDTA to develop GOMS code (although GDTA is at a higher level and does not describe decision outcomes). GOMS code can be translated to ACT-R, a cognitive architecture. ACT-R models of different interfaces can be used to compare interface efficiency.
 - ACT-R models will help identify when errors compound and when human errors interact with equipment errors
 - Developed diagram describing research collaboration between three teams:



- Important dates
 - Next meeting – 5/20/2005 at 9:00am in Venture III.